

STATUTORY RIGHT OF WAY PLAN OVER PART OF: LOTS 1, 15, 16, 21, 22 AND 25 DISTRICT LOT 4598 KOOTENAY DISTRICT PLAN EPP88660; AND LOTS 3 AND 4 DISTRICT LOT 4598 KOOTENAY DISTRICT PLAN EPP73094.

Pursuant to Section 113 of the Land Title Act.

BCGS 82F.022

The intended plot size of this plan is 864mm in width by 560mm in height (D size) when plotted at a scale of 1:600



LEGEND

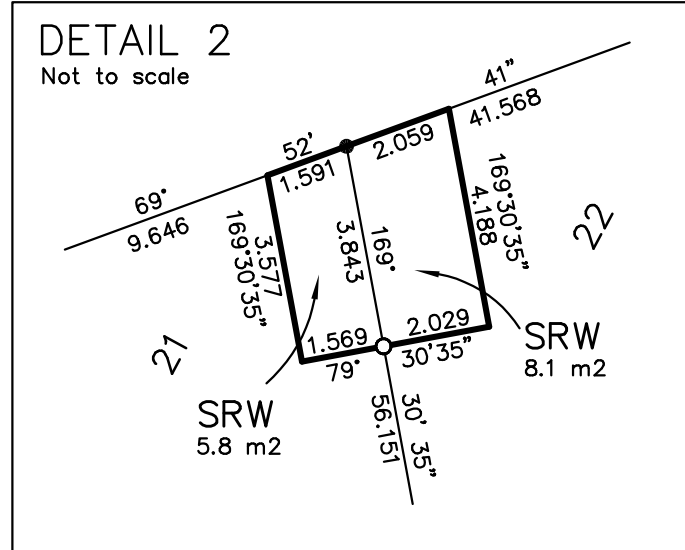
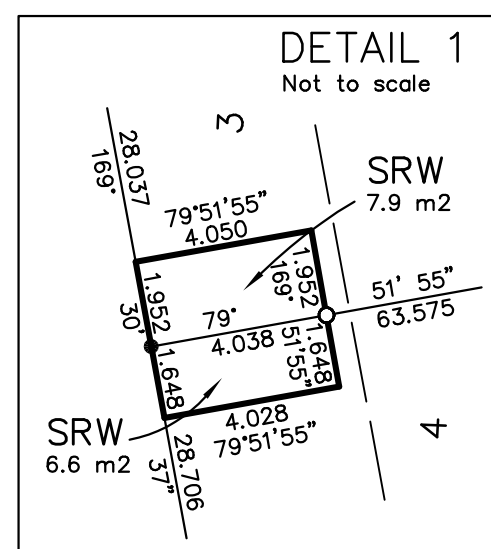
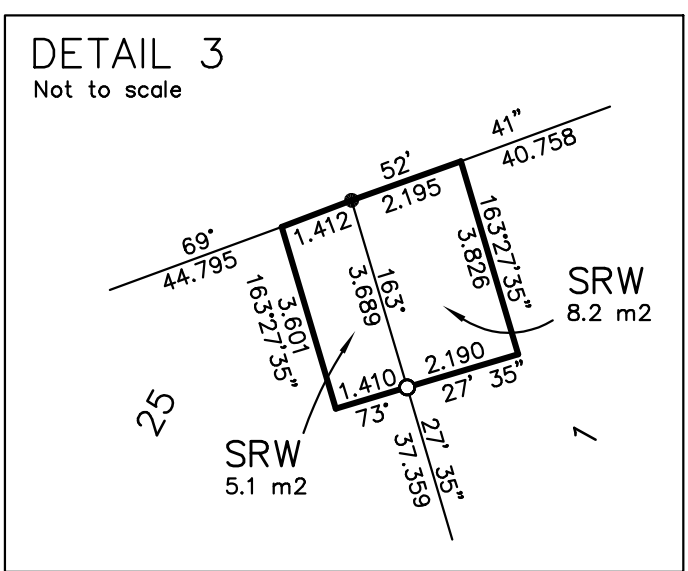
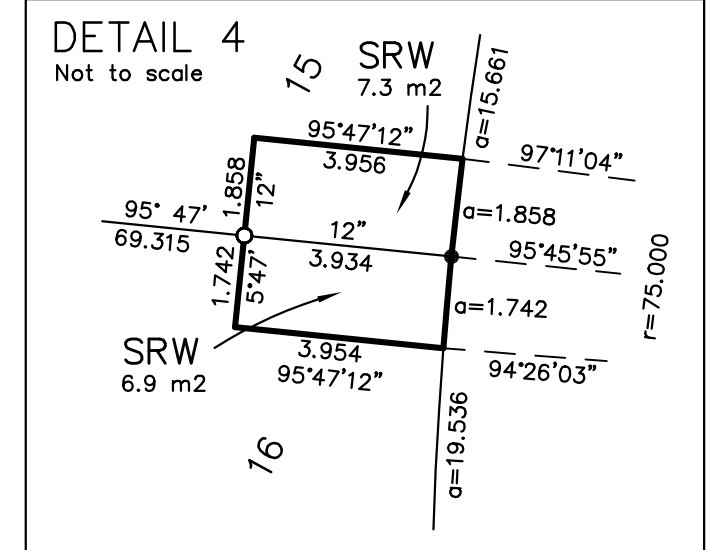
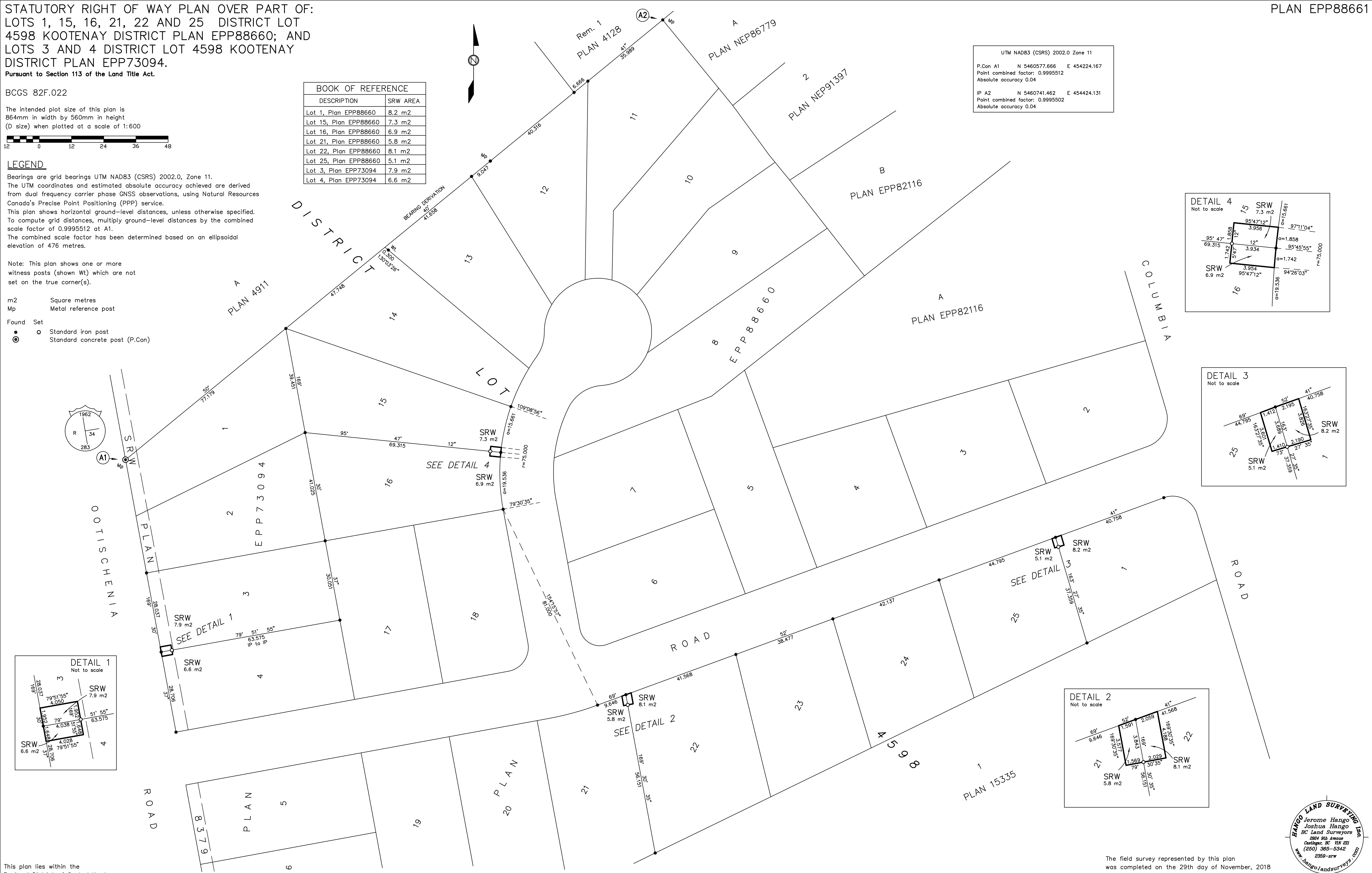
Bearings are grid bearings UTM NAD83 (CSRS) 2002.0, Zone 11. The UTM coordinates and estimated absolute accuracy achieved are derived from dual frequency carrier phase GNSS observations, using Natural Resources Canada's Precise Point Positioning (PPP) service. This plan shows horizontal ground-level distances, unless otherwise specified. To compute grid distances, multiply ground-level distances by the combined scale factor of 0.9995512 at A1. The combined scale factor has been determined based on an ellipsoidal elevation of 476 metres.

Note: This plan shows one or more witness posts (shown Wt) which are not set on the true corner(s).

- m2 Square metres
Mp Metal reference post
Found Set
Standard iron post
Standard concrete post (P.Con)

Table with 2 columns: DESCRIPTION, SRW AREA. Lists lots 1-25 with their respective SRW areas in m2.

UTM NAD83 (CSRS) 2002.0 Zone 11
P.Con A1 N 5460577.666 E 454224.167
Point combined factor: 0.9995512
Absolute accuracy 0.04
IP A2 N 5460741.462 E 454424.131
Point combined factor: 0.9995502
Absolute accuracy 0.04



This plan lies within the Regional District of Central Kootenay.

The field survey represented by this plan was completed on the 29th day of November, 2018
Joshua G. Hango, BCLS 953.

